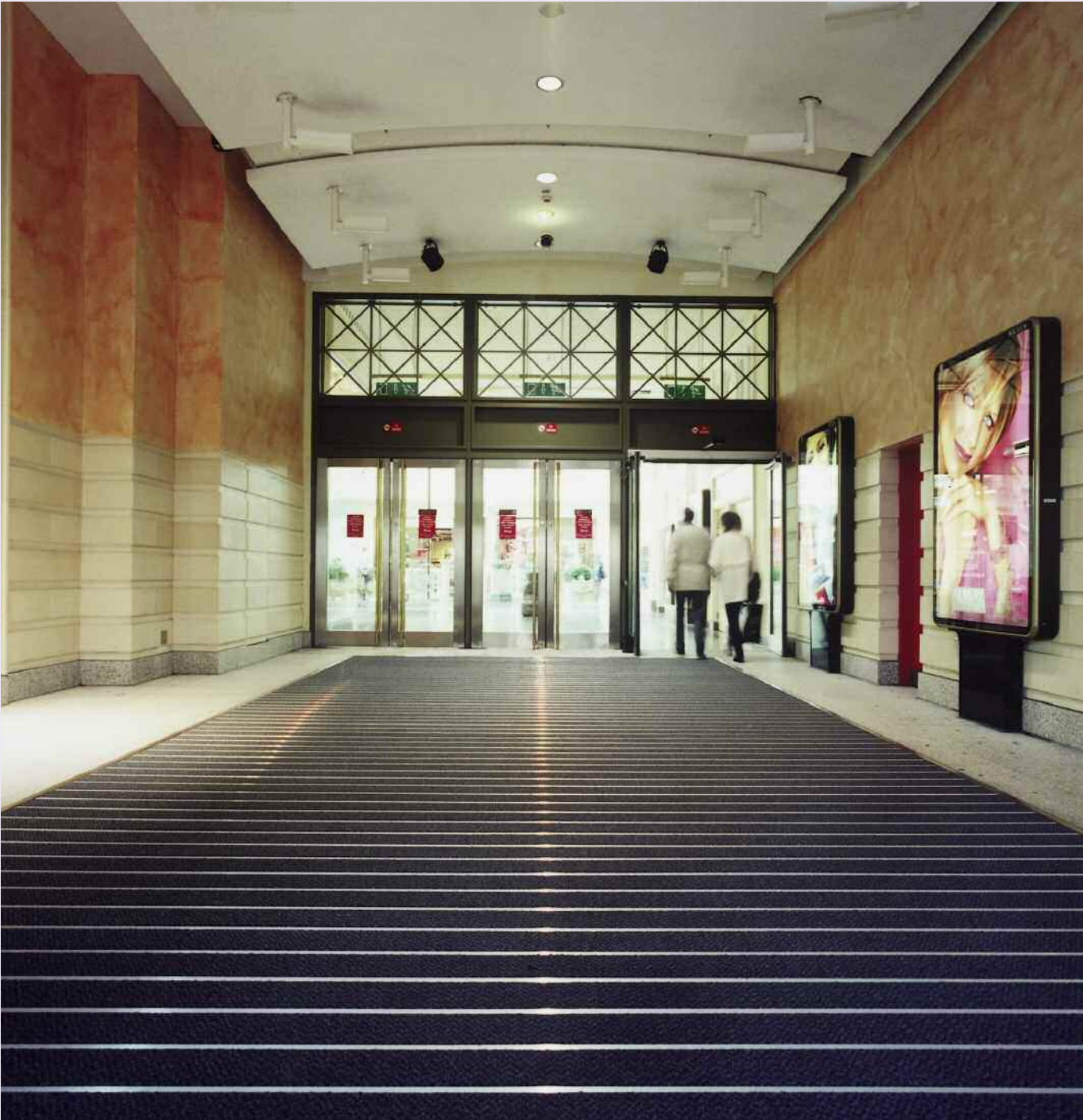


**THE  
BIG EASY**

# The Nomad™ Optima 8800

Easy aluminium frame entrance matting system for prestigious appearance and superior performance



**nomad**<sup>TM</sup> matting  
■ ■ ■ ■ ■ ■ ■ ■ ■ ■



# Easy to deliver superior cleaning performance

## The problem

Ineffective matting systems at entrances not only look dirty and worn but can be a hazard to visitors.

Dirt and water not trapped by the matting is carried into the building and can result in slips and falls, increased maintenance costs and prematurely worn floor surfaces, which could prove detrimental to DDA compliance.

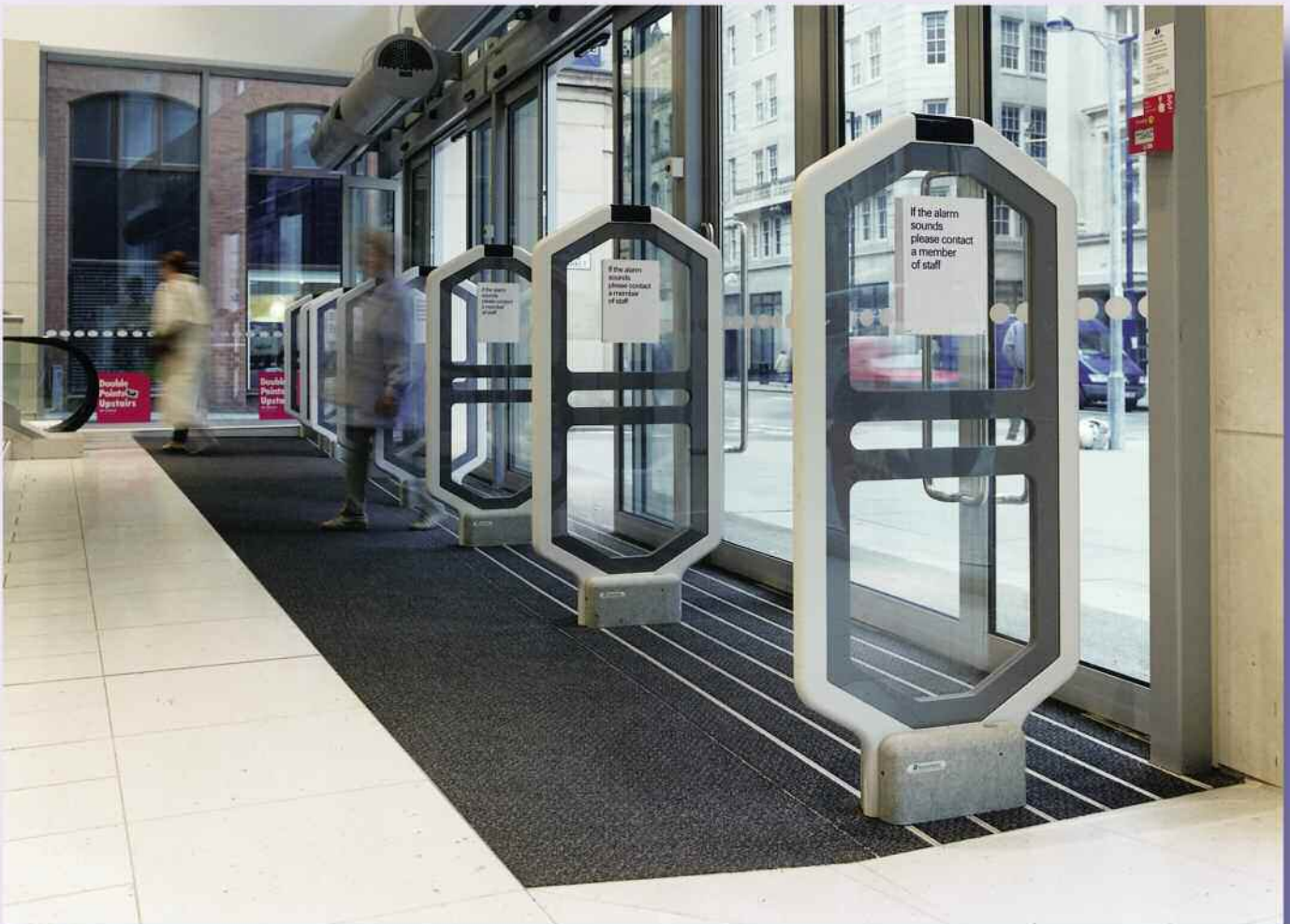
## The solution

Nomad Optima 8800 frame matting delivers all the following advantages in one solution:

- Superior dirt and moisture retention to standard systems
- Stain hiding abilities
- Prestigious and attractive appearance
- Strong, yet lightweight aluminium frame
- Noise absorbing matting
- Comfortable and welcoming underfoot
- Flat walking surface

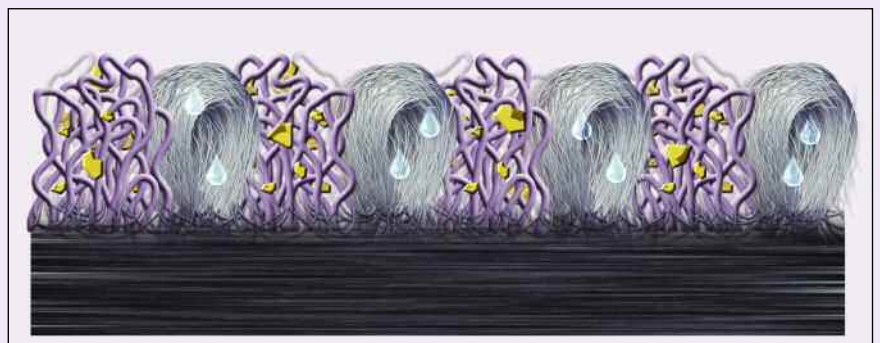
## Product description

- Wide panel design to maximise foot contact with matting, and increase both comfort and the effective performance area available to remove soil
- Innovative interlocking aluminium panels set on resilient foam strips
- Panels contain Nomad Aqua 8500 matting which consists of fine and coarse fibres for superior removal and concealment of dirt
- Aluminium T-section component for sub dividing large areas



## A unique combination of fine and coarse fibres

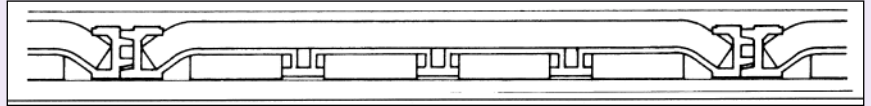
Whilst the aluminium profiles provide a scraping action, the interlocking panels contain a high performance, highly durable carpet style matting with a combination of fine and coarse fibres for excellent moisture and dirt removal. The matting has also been designed to camouflage dirt and water marks thus maintaining appearance over time.



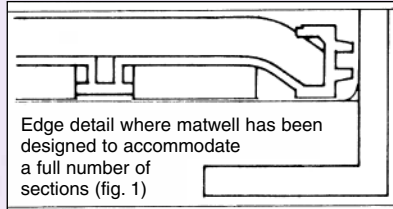
# Easy to install, on site

Nomad Optima 8800 is presented in easy to install interlocking aluminium planks in two popular lengths of 1500mm and 2200mm.

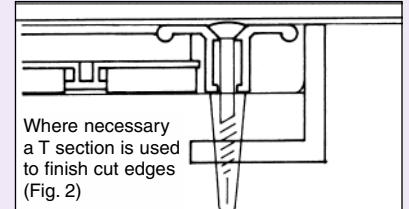
- This flexible modular approach, with no templating requirement makes installation into square, oblong or irregular wells easy
- This modular approach means fast installation
- The product is available from stock in economical packs for minimum wastage
- No waiting for delivery of a templated mat
- Standard flooring accessories such as edge trims and T bars can be used making the job neat and professional.



Profile of aluminium structure containing Nomad Aqua 8500 infills. Interlocking design holds matting firmly in place and prevents vertical movement.



Edge detail where matwell has been designed to accommodate a full number of sections (fig. 1)



Where necessary a T section is used to finish cut edges (Fig. 2)



# Attractive modern colours to complement your surroundings



Slate Grey



Anthracite Black



Navy Blue

# Easy to maintain

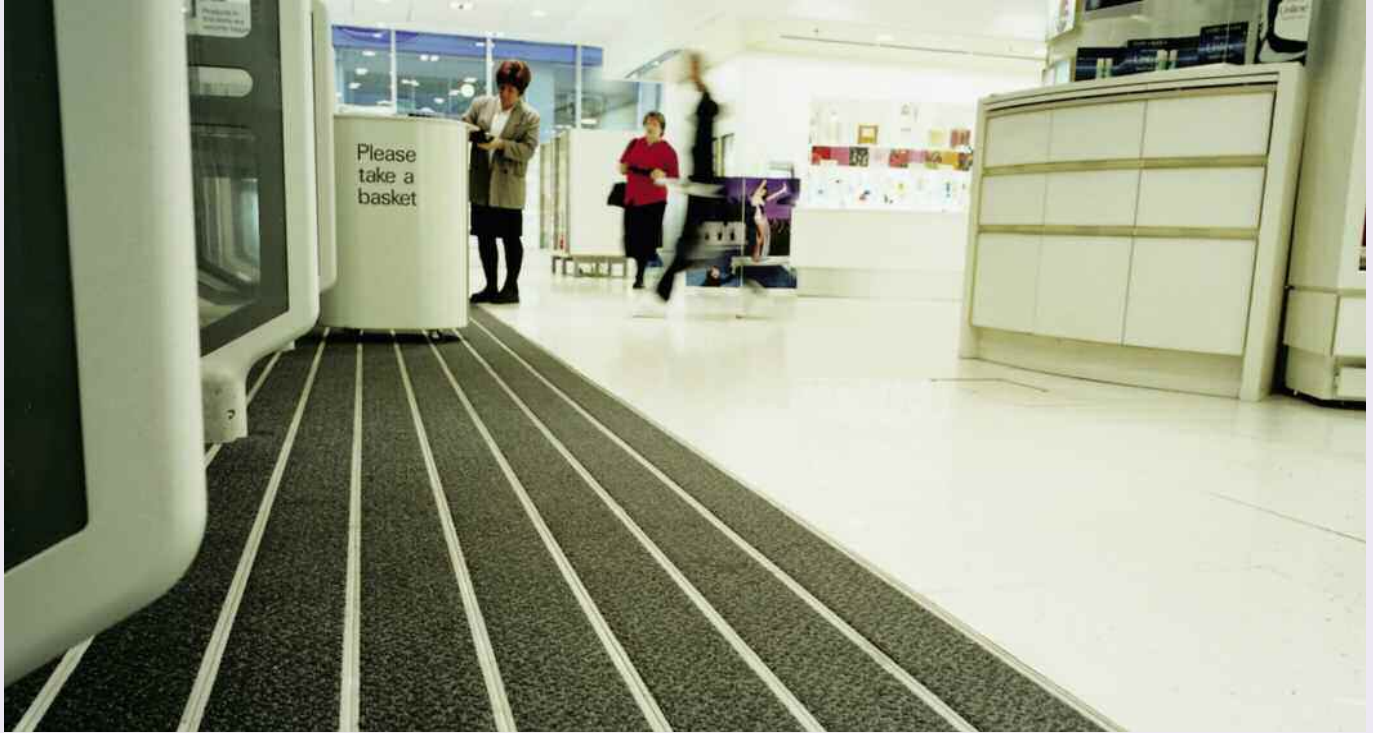
## Daily Cleaning

Thoroughly vacuum and check for / remove chewing gum (see 3M Industrial Cleaner – citrus based – or similar proprietary systems)

## Periodic Cleaning

Hot water extract the matting twice using carpet extraction equipment (not exceeding 50°C)

For severe soiling, firstly shampoo with a slow speed rotary floor machine, fitted with a carpet brush, then hot water extract as above.



# Technical data

Loads over 250kg (especially on small, hard wheels less than 150mm diameter) can damage the matting. Protect the matting with hardboard or similar if such loads must pass.

Total depth	14mm to suit 14-16mm matwell	Positioning	Indoor
Total weight	12.0kg/m <sup>2</sup>	Traffic (crossings a day)	1500-5000
Panel width	150mm (148.4mm when fitted)	Pile material	Polymide
Panel length	2200mm and 1500mm	Pattern	Random
Matwell frame	Available in 4 sizes, refer to 3M	Pile thickness ISO 1766	4.8mm
T-Section length	3000mm	Pile weight ISO 8543	0.770 Kg/sqm
Cushioning strips	High density, closed cell PVC foam	UV resistance ISO 105 BO2	Class >6
Infill composition	Nylon 6-6 with PVC backing	Dimensional stability ISO 2551	+/- 2%
Flammability	German standard B1, DIN 4102-14 & EN ISO 9239:Part1	Antislip properties BIA test (ZH 1/571 & DIN 51130)	R12

# Easy to contact

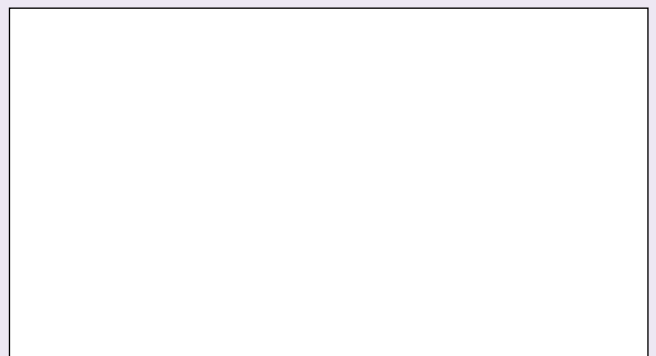


## Building & Commercial Services 3M United Kingdom PLC

Customer Service Centre  
Hudson Road, Bedford, MK41 0HR  
Tel: 0 12 34 22 94 96  
Fax: 0 12 34 22 95 94  
Email: commcareuk@mmm.com  
www.3M.com/uk/flooring

## 3M Ireland

3M House  
Adelphi Centre  
Dun Laoghaire  
Co. Dublin  
Tel: (01) 280 3555  
Fax: (01) 280 3509



3M and Nomad are trademarks of 3M company.